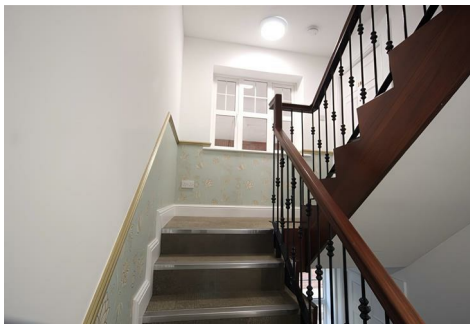




RE/MAX

Elite



10 Horsley Road, Sutton Coldfield, B74 3FE

£1,000 Per month

AVAILABLE NOW - Beautiful 2-Bedroom Apartment

Introducing a meticulously maintained modern apartment, offering an excellent opportunity for contemporary living.

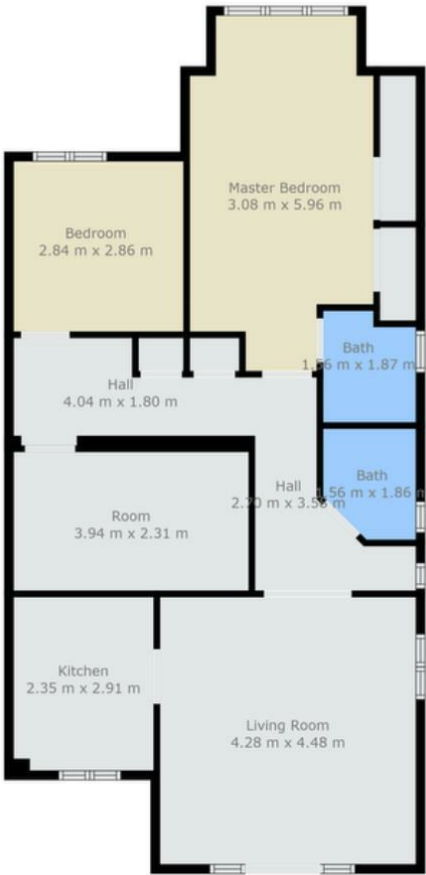
This property features two spacious double bedrooms and is conveniently accessible via a private paved driveway. Security is provided through the main entrance lobby.

The layout includes a well-appointed main bathroom and a modern en-suite for added comfort. The kitchen is thoughtfully separated, ensuring privacy during meal preparation while maintaining a clean and organised living space.

The apartment is unfurnished; please note the photos reflect the flat as it appeared when the landlord lived there.

Additional features include:

Floor Plan

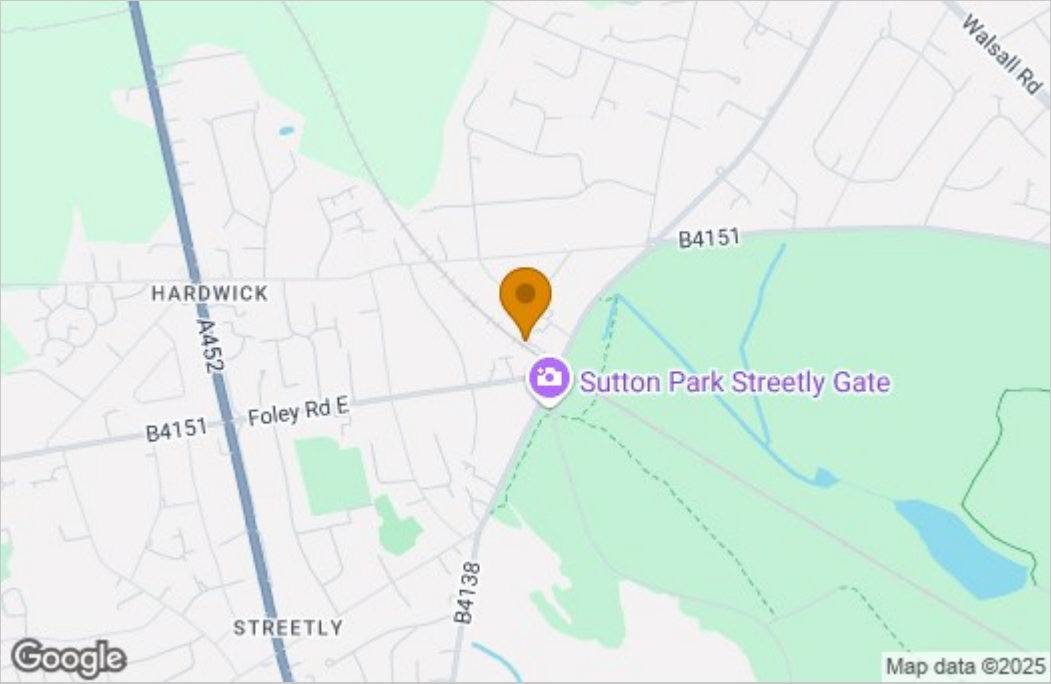


TOTAL: 83 m2
FLOOR 1: 83 m2

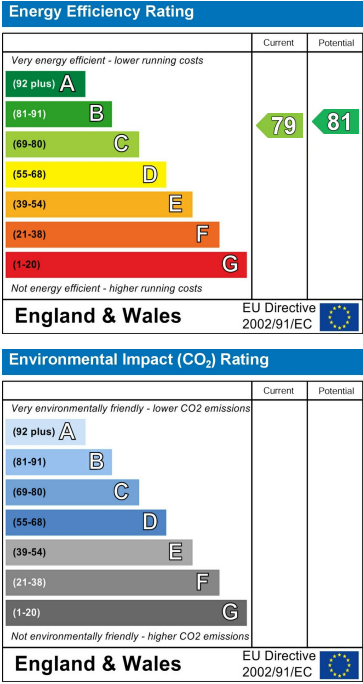
Floor Plan Created By Cubicasa App. Measurements Deemed Highly Reliable But Not Guaranteed.



Area Map



Energy Efficiency Graph



These particulars, whilst believed to be accurate are set out as a general outline only for guidance and do not constitute any part of an offer or contract. Intending purchasers should not rely on them as statements of representation of fact, but must satisfy themselves by inspection or otherwise as to their accuracy. No person in this firm's employment has the authority to make or give any representation or warranty in respect of the property.